

# Cockroach Identification Chart



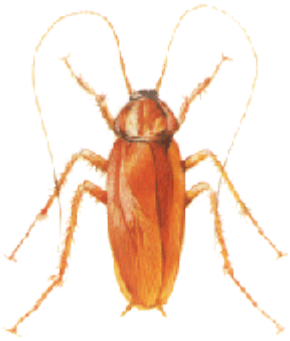
## **GERMAN COCKROACH**

**Life Span - Female - 14 to 26 weeks**

**Incubation period of eggs - 17 to 35 days**

**NUMBER OF OFFSPRING - 20,000 per annum**

The adult German cockroach is of light amber brown colour, and commonly nest in electrical and cooking appliances, wall cavities, cracks and crevices around the kitchen and bathroom areas.



## **AMERICAN COCKROACH**

**Life Span - female - 15 to 84 weeks**

**Incubation period of eggs - 29 to 58 days**

**NUMBER OF OFFSPRING - 800 per annum**



## **ORIENTAL COCKROACH**

**Life Span of Female - 5 to 26 weeks**

**Incubation period of eggs - 37 to 81 days**

**NUMBER OF OFFSPRING - 200 per annum**



## **AUSTRALIAN COCKROACH**

**Life Span of Female - 17 to 26 weeks**

**Incubation period of eggs - 40 days**

**NUMBER OF OFFSPRING - 200 per year**



 **1300 13 12 14**

[www.goodepestcontrol.com.au](http://www.goodepestcontrol.com.au)